

# Robin Subaru Model Numbers

Robin engines are identified by **MODEL**, **SPECIFICATION**, and **CODE NUMBER**. For each model there may be many different versions called specifications. Each specification will be unique in some way. The difference may only be the paint color or it may have a different type of PTO or some other significant difference.

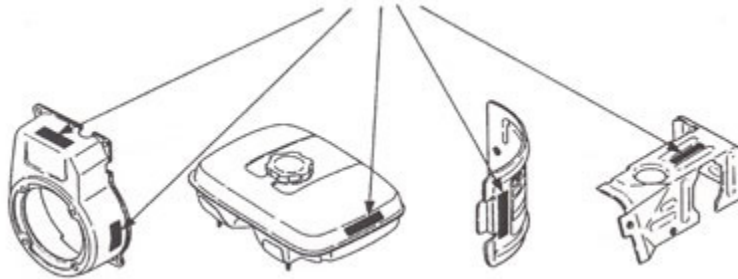
In order to identify the correct service part number, it is important to confirm the specification and code numbers for your engine. The specification and code number together are known as the **PRODUCT NUMBER**.

All Robin 4 cycle engines have a Product number label similar to the label illustrated below.



[Example of Product Number]

## PRODUCT NUMBER LABEL LOCATIONS



The **Product Number Label** has a 15 digit alphanumeric string that consists of the **SPECIFICATION (SPEC)** number (11 digits) and the **CODE** number (4 digits).

